

**SAINSBURY
CENTRE**

Living Art Sharing Stories

**AUTUMN
BROCHURE
2024**



**WHY DO
WE TAKE
DRUGS?**

SAINSBURY CENTRE AUTUMN BROCHURE 2024

sainsburycentre.ac.uk



Art and artists aid our exploration and understanding of this use of drugs across time and space. They encourage us to question whether there is a right way to manage their use in society, including when and why some drugs are socially accepted, whilst others are not.

Visitors will be in for an eye-opening experience, taking you on a journey from South Africa to New York and from Japan to the Amazon, delving into drug cultures around the world and bringing to life the real-life experiences of drug taking in society.

In March 2023, around 10% of people aged 16 to 59 in England and Wales had used an illegal drug in the last 12 months. This is around 10,000 more than in 2022 and 2% more than a decade ago, according to the Office for National Statistics. Plus, the amount of people dying from drug misuse in the UK is amongst the highest in Europe.

Museums can help people answer the most important questions in our society and why we take drugs is a fundamental one. The innovative and thought-provoking exhibitions on display this autumn come to Norfolk from around the world. They take visitors through the highs and lows of drugs and their influence on so many people's lives across the globe.

We are so grateful to the vast range of friends and collaborators from around the world who are bringing their remarkable practice and hard-hitting experiences to a new audience at the Sainsbury Centre.

Jago Cooper
Executive Director

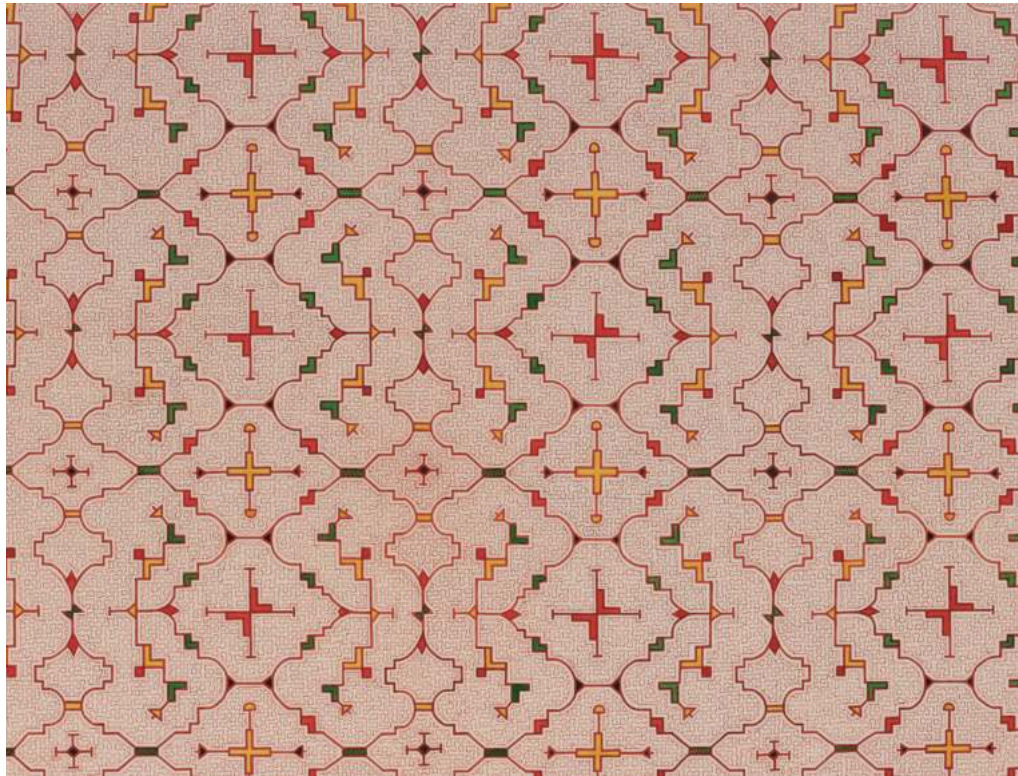


ABOVE: Jago Cooper. Photo: Kate Wolstenholme LEFT: Richard Evans Schultes, Youth on the Paramo of San Antonio above the valley of Sibunday, 1941

INTRODUCTION 01

NEW SEASON: WHY DO WE TAKE DRUGS?

Autumn 2024



In September 2024, the Sainsbury Centre is activating art to address its current big question through a six-month season of interlinked exhibitions and programmes exploring *Why Do We Take Drugs?*

From alcohol and caffeine to ayahuasca and heroin, this season uses art to take visitors on a journey of

investigation, inviting audiences to explore the world of global drug cultures from illegal to familiar across one mind-blowing museum landscape.

This carefully curated programme delves into drug cultures around the world and brings to life the highs and lows of drug-taking in society.

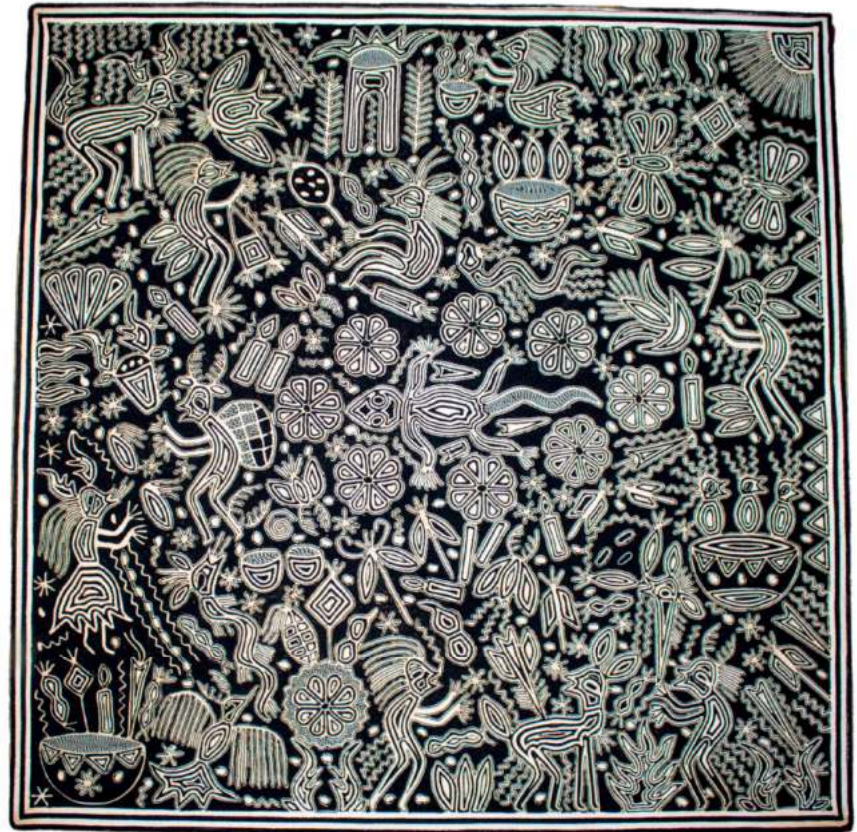
Visit our website for more on these activities.

EXHIBITION TOURS

There will be free guided tours of these exhibitions: *Power Plants: Intoxicants, Stimulants and Narcotics* and *Ayahuasca & Art of the Amazon* every Tuesday to Sunday at 11.30am. Please reserve your place at Gallery Reception.

POWER PLANTS: INTOXICANTS, STIMULANTS AND NARCOTICS

14 September 2024 – 2 February 2025



From peyote to tobacco, for millennia people have used the psychoactive properties of plants as an integral part of social, ceremonial and religious life. In many parts of the world, plants of power – whether this be spiritual, economic, mind-altering or cultural – are regarded as sacred. They are valued for

their capacity to deepen human relationships, facilitate communication with ancestors, and heal the sick.

Power Plants: Intoxicants, Stimulants and Narcotics features objects, sculpture, yarn paintings, digital works and textiles, plus

a selection of Japanese art, which explores the important role that stimulants and intoxicants continue to perform within societies.

The show makes reference to global artefacts that are connected with their traditional consumption.

AYAHUASCA & ART OF THE AMAZON

14 September 2024 – 2 February 2025



The exhibition focuses on the creativity of Indigenous artists of the Peruvian Amazon's Shipibo-Konibo community, presenting historical artefacts alongside contemporary works by living artists.

Ayahuasca & Art of the Amazon is a rare opportunity to appreciate the breadth of Amazonian art, which ranges from the mesmerising abstract geometrical patterns known as 'kené' to figurative portrayals of Amazonian cosmologies and spiritual encounters.

Visitors will also be able to take a virtual 'trip' on an ayahuasca journey – guided by a shaman – thanks to a powerful VR experience. Please note, this experience is restricted to those aged 13 and over.

This exhibition was developed by the musée du quai Branly – Jacques Chirac in Paris. Curated by David Dupuis.

 **MUSÉE DU QUAI BRANLY
JACQUES CHIRAC**

This exhibition considers the impact of the mind-altering, psychotropic vine – ayahuasca – within Western Amazonian social life. It explores how the

ritual consumption of ayahuasca is intimately linked to the artistic production of ceramics, textiles, sculpture, painting and photography.

HEROIN FALLS

23 November – 27 April 2025



Magnum photographer Lindokuhle Sobekwa (b.1995) aims his lens at a group of young men from South African township, Thokoza whom have turned to using nyaope. Sobekwa documents their journey, capturing their daily activities and chores, whilst part two of his project is redemptive, focusing on rehab and introspection.

Most documentary projects about addiction expose someone else's self-destructive behaviour, but Scottish born, New York based photographer Graham MacIndoe (b.1963) took a very different approach: he photographed himself during the years he was addicted to heroin.

The resulting photographs document the harsh realities of drug addiction and the photographer's use of the artistic medium in his own recovery.



Heroin Falls highlights the realities of heroin addiction through the juxtaposition of different worlds through the eyes of two incredible photographers.

The exhibition aims to show connections which will lead viewers to acknowledge substance misuse is a global challenge that transcends race, location and class.

MAGNUM

TOP: Graham MacIndoe, *My Addiction*. © Graham MacIndoe. ABOVE: Lindokuhle Sobekwa, *Thabang waking up in the early hours of the morning*. © Lindokuhle Sobekwa/Magnum Photos

LINDSEY MENDICK: HOT MESS

23 November – 27 April 2025



Lindsey Mendick subverts the tradition of ceramics with her darkly comic, confessional works.

Her newly commissioned sculptures which will sit in the Sainsbury Centre's permanent collection will be strikingly personal, tackling social taboos and exposing the artist's secret fears.

For the *Why Do We Take Drugs?* season, Mendick will reveal her reliance on antidepressants and alcohol, used to navigate stressful social situations and cope with the threatening unpredictability of daily life. Mendick's subversive practice candidly addresses the stigma attached to the use of certain medications, such as antidepressants.

Positioning her works amongst paintings by Leonora Carrington and Francis Bacon and sculpture from the Arctic to Africa, Mendick will create a surprising intervention in the Sainsbury Centre's 'Living Area' collection display to disrupt the clean aesthetic like a wild and unwelcome guest at a party.

SCULPTURE PARK

IVAN MORISON

October 2024 – February 2025



The Sainsbury Centre, in collaboration with Orleans House Gallery, presents *Towards the Weird Heart of Things*, a new site-specific

series of sculptures by artist Ivan Morison in response to the curatorial provocation, *Why Do We Take Drugs?*

The commissioned work features sculptures constructed from abundant agricultural organic materials such as hemp, straw, hay, sheep's wool, and timber. These materials are sourced from the seasonal harvest of East Anglian farms and combined with natural binders like lime and clay, give the sculptures a haystack-like appearance.

These evolving four-metre-high sculptures in the Sainsbury Centre Sculpture Park will change colour, transform, or decay and compost over time, challenging the permanence of traditional sculpture.

The works engage farming communities and encourage us to reassess and harmonise our connection to the natural world, presenting nature as a vital drug for human health and well-being.

At the heart of this commission is an 'eco-wakening' – to inspire hope and point us to the fact that fatal risk of anthropogenic climate change can be avoided if we collectively focus on taking climate action and finding innovative solutions.

LIVING AREA

Free guided tours. Tuesday-Sunday, 11am and 2pm
Reserve your place at Gallery Reception



The Living Area displays a myriad of objects from the Sainsbury Centre collection including recent acquisitions like Aubrey Williams' *Petrification VIII*, 1972 and Gurminder Sikand's *Woman in a Landscape*, c.1987.

Aubrey Williams (1926–1990) was a Guyanese artist based in the UK known for his expressive paintings that combine inspiration from German Expressionism,

Abstract Expressionism and Pre-Columbian art. He was one of the artists that founded the Caribbean Artists Movement in the 1960s and is remembered as one of the most important British artists working in the twentieth century.

Gurminder Sikand (1960–2021) moved from India to Britain aged ten. She exhibited widely in exhibitions of Black and

Asian art in the 1980s and 1990s. More recently, her work has been shown in *Women In Revolt! Art and Activism in the UK 1970–1990* at Tate Britain and *RE/SISTERS: A Lens on Gender and Ecology* at The Barbican, London.

Their works are presented at the Sainsbury Centre amongst objects from across time and place making exciting new connections.

LIVING ART



There is no right or wrong way to meet art or behave in a museum.

Allow yourself to connect with art and go on an emotional journey at the Sainsbury Centre.

We believe that art is alive and available for everyone to enjoy and experience in their own way.

Venture into our Living Area and become part of the gallery itself by entering into the glass box. Forge relationships with art by hugging Henry Moore's *Mother and Child* sculpture, embrace her and hug her. Connect with your favourite pieces through the Living Art and Sharing Stories audio tours on Smartify.

Wander through the gallery in any way you choose and meet the collection in new and engaging ways, much like you'd meet other people.

For more details, read our Handbook for Living Art or visit: sainsburycentre.ac.uk/whats-on/livingart

SMARTIFY AUDIO TOURS AND OBJECT RECOGNITION



FREE SMARTIFY TOURS

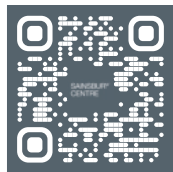
Through the Smartify app, you can listen to our audio experiences and discover new ways to meet the art in our collection.

HOW TO USE

1. Download the free Smartify app at [Smartify.org](https://www.smartify.org) or scan the QR code:

2. Click 'Explore' in the app and search for 'Sainsbury Centre'

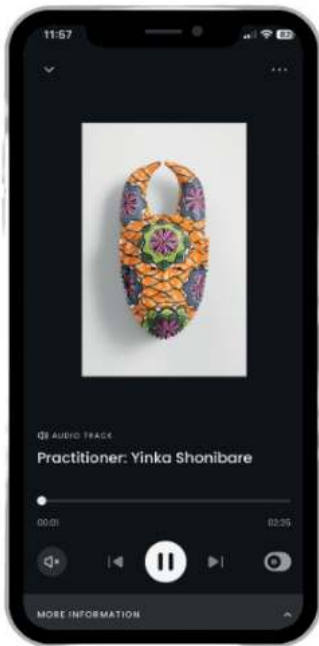
3. Browse our audio tours



SCAN AN OBJECT

Just click 'scan' and point your camera at an object to find out more.

You can also save objects you have scanned to your smartphone in a personal digital collection which you can share with others on Smartify.



SPOTLIGHT TOURS – ALL NEW

A Journey Across the World
Autumn 2024



Join our volunteer guides on *A Journey Across the World* with this brand-new series of spotlight tours. Following a sell-out series of tours earlier this year, our guides return in the autumn to tell the story of objects in the Sainsbury collection through a geographic lens.

Our guides will meet you for coffee and cake in the Terrace Cafe at 10.30am before beginning the tour at 11.00am.

Wednesday 9 October Africa Alive!

Celebrate African treasures from the collection and our most recent acquisitions. Guides: Chris Jones and Jenni Brace.

Friday 18 October Living on the Edge

The life, survival and future of the Inuit peoples of Alaska. Guide: Jolyon Gough.

Thursday 24 October The Art and Influence of Mexico

How were modern British artists, Henry Moore and Leonora Carrington, influenced by the works of ancient Mesoamerican cultures? Volunteer guides: Philippa Farrant and Julie Roy.

Tuesday 29 October Artists in Flight

The impact of moving homeland and forging a new identity. Volunteer guide: Caroline Robson.

Thursday 7 November
Treasures from the Andes
Art, ritual and survival in Peru and Ecuador. Volunteer guides: Georgie Livingstone and Amanda Braden.

Thursday 14 November On the Other Side of the World

A tour of the Pacific Islands and New Zealand. Volunteer guides: Dave Johnson and Jean Webster.

Tuesday 19 November An Egyptian Odyssey

Egyptian artefacts in the Sainsbury Centre and their ongoing influence. Volunteer guides: Polly Gould and Andrew Tarbuck.

Saturday 23 November Hands Across the World

What can we learn from the depiction of hands in the collection? Volunteer Guide: Diane Freeborn.

TICKETS

£6, numbers limited, pre-booking essential.

See our online events page to book. [sainsburycentre.ac.uk/event-category/events](https://www.sainsburycentre.ac.uk/event-category/events)

BIG QUESTIONS

What is love? Does colour look the same to everyone? Where do I belong?

We all have big questions in life, and at the Sainsbury Centre, we believe art can help us explore them.

We are not just a museum about artists, cultures, or movements, but a place of experience, where art is alive and connects with your emotions.

With each six-month season, we focus on a different big question through captivating exhibitions, artist interventions, and thought-provoking events.

It's not about finding a single answer to these questions, but sparking conversations, sharing perspectives, and igniting your imagination.

So far, we have explored *How do we adapt in a transforming world?*, *What Is Truth?* and our current question is *Why Do We Take Drugs?*

What are the biggest questions in your life? Share them with us on socials and join the conversation!



ABOVE: Big Question: Exploring the Living Area. (Francis Bacon, *Two Figures in a Room*)
Photo: Kate Wolstenholme

LEARNING: CHILDREN AND FAMILIES

Visit sainsburycentre.ac.uk for details



ABOVE: Big Sunday. Photo: Kate Wolstenholme

Big Sundays

Join us on the first Sunday of every month for an event with activities for all ages.

For families: Meet an artist to explore artworks and ideas.

Adults and young people (12+): Explore our new community space and take part in a collaborative project.

Pop in at any time during the morning.

FREE, no need to book.

Activities start from:
10.30am–12.00pm

DATES

1 September
6 October
3 November
1 December

LEARNING: CHILDREN AND FAMILIES

Visit sainsburycentre.ac.uk for details

Mini Studio

Term-time workshops for parents, carers, and preschool children. Take part in relaxed guided exploration followed by multisensory play with a Sainsbury Centre artist.

All sessions run from:
10.30am–12.00pm

10 September
Dizzy

8 October
Tea Party

12 November
Playtime Project Special

10 December
Dreaming

Family Studio
26 October
10.30am–2.00pm
A Family of Trees

An artist-led workshop for all the family. Come along to explore the oak trees in our Sculpture Park together and make collaborative, nature-inspired artworks with associate artist Ian Brownlie. Suitable for ages 5 and over.

Young Artists' Studio (7-11)
31 October
The Wild Woods
10.30am–3.30pm



Spend a day with clay and other natural materials at the Sainsbury Centre alongside associate artist Jo Chapman! We will take inspiration from the trees in our Sculpture Park to create

our own three-dimensional, textured works.

Book all studio workshops on our website and pay if and what you can.

LEARNING: SCHOOLS AND OUTREACH

Visit sainsburycentre.ac.uk for details



VESSELS: Ceramics and more. Workshop for Primary School Teachers

Thursday 10 October

1.30-5.30pm

FREE

Booking essential, email:
scvgroupvisits@uea.ac.uk

Join us in this practical workshop led by our Associate Artists exploring some of the numerous vessels in the Sainsbury Collection. Natalie Hammond will share her expertise to get you working with clay with more confidence, and Kate Munro will lead a session in which we will experiment with creating hollow forms from a range of unusual materials with different properties.

For more details:
sainsburycentre.ac.uk/learning/professional-development-for-educators

LEARNING: YOUNG PEOPLE'S PROGRAMME

Visit sainsburycentre.ac.uk for details

Young Associates

Starts Tuesday 15 October
4.40pm–6.30pm
FREE, booking essential

Sainsbury Centre Young Associates is a free creative programme for young people aged 16-25 years old to try out new ideas, learn new skills, share your work, meet artists and join a network of new collaborators.

This autumn, participants in the Young Associates programme will experiment with materials, taking aspects of the Sainsbury Centre art landscape as a starting point. They will work collaboratively to develop their own project with guidance from artist Anna Brass and the Sainsbury Centre Learning Team.

For more information and to book, visit our website sainsburycentre.ac.uk from September.



BECOME A MEMBER

Experience more from the Sainsbury Centre by becoming a member. Thank you to our current members for your support; your generosity helps us to care for our collections and continue to open world-class exhibitions.

With an annual membership, you can enjoy a year filled with art. Or why not spread the joy and gift a membership to a loved one? Each membership comes with a free welcome pack and includes the following benefits:

Benefits

- Free and unlimited entry to the Sainsbury Centre and all special exhibitions
- Special exhibition previews
- Priority booking for tours and events
- 20% discount in the Sainsbury Centre Shop*
- 10% discount at the Terrace Café
- Exclusive Members' newsletter
- Exclusive events, talks, and tours
- Members-only parking permit

Annual Membership

- Individual | £45
- Individual + 1 | £50
- Individual + Guests | £75

Young Membership (for under 30s)

- Individual | £35
- Individual + 1 | £40
- Individual + Guests | £70

Student Membership

Free student membership is available to all University of East Anglia (UEA) and Norwich University of the Arts (NUA) students with valid student ID.

Join us today:

sainsburycentre.ac.uk/members
Call 01603 593199
or email us at scva@uea.ac.uk

*Exclusions apply



THE SHOP

Visit sainsburycentre.ac.uk for details

The Sainsbury Centre Shop stocks a wide range of products, from contemporary ceramics and handmade jewellery to greetings cards, art books, and children's toys.

Explore our wide range of exhibition catalogues, covering both current and previous exhibitions – an ideal opportunity to delve deeper into the 'big questions' raised through our seasonal exhibitions.

Or why not shop our range of exhibition merchandise and bespoke souvenirs, featuring familiar favourites from our permanent collection.

And if you're feeling inspired yourself, our shop also stocks a great range of art supplies, sketchbooks, and drawing guides – perfect for every budding or practicing artist.

Remember, members get 20% off their purchase.* Visit the Sainsbury Centre shop in person during opening times.

*Exclusions apply



THE TERRACE CAFE

Tuesday–Friday: 9.30am–4.30pm

Saturday–Sunday: 10am–4.30pm



Sit back and enjoy the countryside views from the Terrace Cafe, with coffee from multi-award-winning roasters Square Mile, serving a menu of popular espresso-based drinks, and single origin filter coffee.

Or if you prefer, choose from our selection of refreshing soft drinks and teas from the Norfolk Tea Co.

Enjoy one of our delicious sandwiches filled with high quality local ingredients, including plant-based options!

Or choose from our selection of sweet and savoury snacks from leading suppliers from across the region, including cakes and scones from the amazing Hestia Patisserie, the award-winning Figbar, and Sticky Fingers Blinding Bakes.

And if you're out walking your dog, pop into the Terrace Cafe for a takeaway drink and treats for your four-legged friend!

Members receive a 10% discount on their entire order.

Support the Sainsbury Centre and help bring amazing art to life!

The Sainsbury Centre exists thanks to the generosity of others, from the gift of Lord and Lady Sainsbury in 1978 to the current day support of individuals, trusts and foundations, and corporate partners. This support enables the Centre to stage world-class exhibitions, to deliver inclusive family and communities programmes, and produce radical new content on our digital channels and in the museum space.



If you are interested in supporting the Sainsbury Centre and enable more people to experience groundbreaking art, please contact:

SC.Development@uea.ac.uk

VISITOR INFORMATION

Visit sainsburycentre.ac.uk for details

INFORMATION

Sainsbury Centre
University of East Anglia,
Norwich Research Park,
Norwich NR4 7TJ

01603 593199. Lines open
Monday–Friday 10am–5pm

OPENING TIMES

Tuesday–Friday 9am–6pm
(Special exhibitions open at 9.30am)

Saturday–Sunday 10am–5pm
Closed Mondays, including
Bank Holidays

ENTRY

Our Universal Ticket gives you access to everything at the Sainsbury Centre, including our Permanent Collection, all special exhibitions, and our incredible Sculpture Park. Tickets are on a 'Pay If and What You Can' basis, meaning you choose how much you'd like to pay, and are available at the Gallery Reception. No prebooking is required. For additional access needs, please contact us at scva@uea.ac.uk or call 01603 593199. If you are a member, please present your membership card at Gallery Reception.

PLAN YOUR VISIT

ACCESS

There is level access on the ground floor to our Permanent Collection, Modern Life Cafe, Sainsbury Centre Shop, Terrace Cafe, and accessible toilets. There is lift access to the Mezzanine Gallery, and lift and ramp access to the Lower Galleries.

MODERN LIFE CAFE

Monday closed
Tuesday to Friday:
9am – 5pm
Saturday and Sunday:
10am – 5pm

THE TERRACE CAFE

Monday closed
Tuesday to Friday:
9.30am – 4.30pm
Saturday and Sunday:
10am – 4.30pm

Last orders taken at 4pm

PARKING

Parking is FREE. Please register your car at the Gallery Reception. If our car park is full, overflow parking is available – please ask at the Gallery Reception for directions.

ANNOUNCEMENTS

SCHOOL VISITS

School visits to all our exhibitions are welcome throughout the year. For more information on school visits and workshops, please email: scvgroupvisits@uea.ac.uk

VENUE HIRE

The Sainsbury Centre regularly hosts corporate events, group visits, location filming, studio workshops and more. To contact us about booking an event and our range of catering options, please email: events.scva@uea.ac.uk

GROUP BOOKINGS

We welcome visits from larger groups. If you would like to make a group booking, please email: scva@uea.ac.uk

CONNECT WITH US

Join us on social media
Search [@sainsburycentre](https://www.instagram.com/sainsburycentre)



HEAR MORE

Join our mailing list

Be the first to hear about new exhibitions and exciting events at the Sainsbury Centre

Sign up today:
sainsburycentre.ac.uk/sign-up



