

ONLINE STUDIO

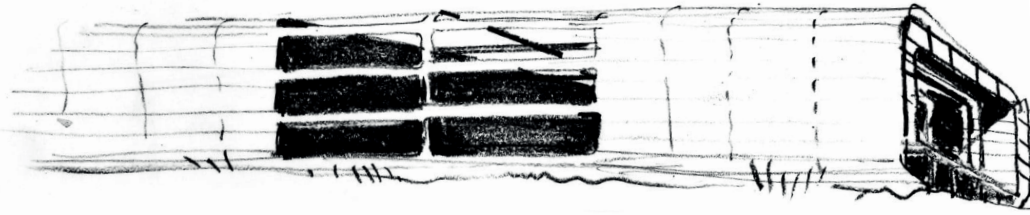
AGE 12-18

**Shape Finding
with artist**

GENEVIEVE RUDD

ShapeFinding

with artist Genevieve Rudd



This pack will help you to explore the lines, shapes and angles in the Sainsbury Centre building.

There are three activities for you to do during a visit, and one to do afterwards, at home or in school.

You'll need: →

Concertina book – fold a long length of paper into 6 sections. (Start by folding it in half, then each half into thirds.)

Paper viewfinder - make one of these by folding a piece of paper in half and cutting into the folded edge. Then cut out a mini window to look through.



Camera - or smart phone

Drawing tools – pencils, pens, felt tips, graphite sticks etc.

1: START BY LOOKING

Activity A:

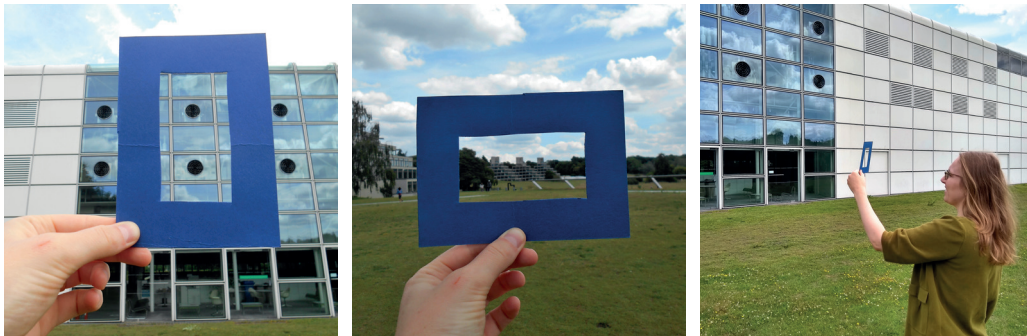
Slowly and carefully, look through your viewfinder, focusing on one part of the building at a time.

Move your viewfinder from left to right, up and down, and try it at different angles.

What do you notice about the building when you look slowly?

What details can you spot?

What shapes can you find?



Activity B:

Imagine you're describing this building to a friend. Which words would you use to explain how it looks?

Choose 6 words to describe the Sainsbury Centre building, and write each one on a separate page of your concertina book. Try to write each word in a style that matches its description – remember to leave space to add your drawings later.

For example:

B I G



2: CAPTURE THE DETAILS

Activity A:

Think about the 6 words you used to describe the Sainsbury Centre.
Take a photo which expresses each word.

For example:

If you chose the word shiny, how would you show that through an image?
You could take a picture of a reflection or of light hitting the surface.

Activity B:

Take photos of the building from different **angles**. Think about how you carefully looked through the paper viewfinder to look at the details of the building and try to take photos in the same way.

For example, to exaggerate the **shape** of the building, think about taking photos.

... when you're low to the ground looking up, or on your tip-toes with the camera pointing down.

... with the camera at an **angle**.

... with the subject off-centre or over to one side.

... showing the scale of the building.

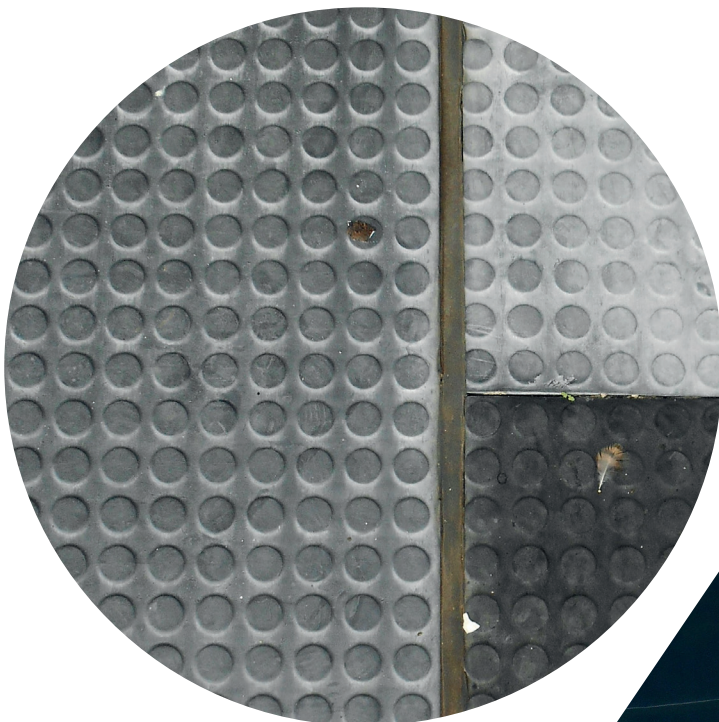
How does this change the look of the building?



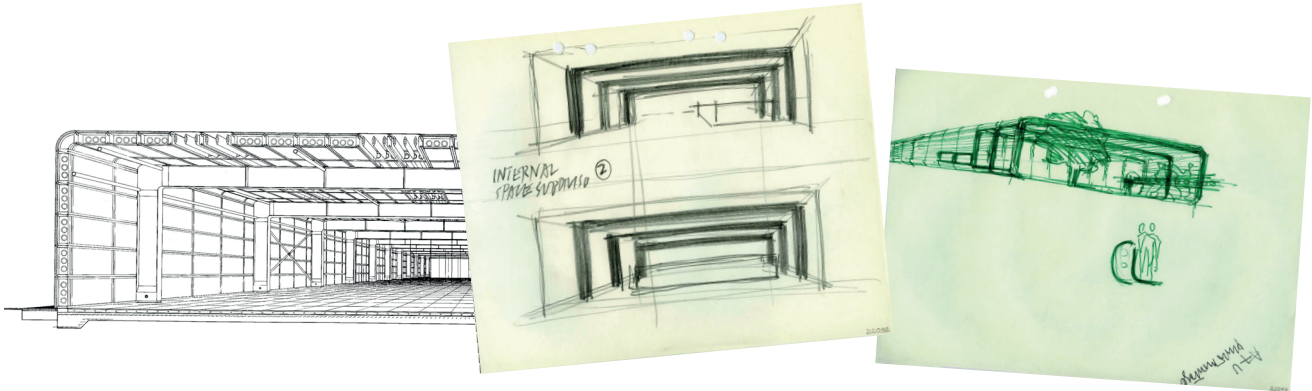
Activity C:

Look for **shapes** in the building.

Choose a shape – circle, square, triangle...
– and see how many examples of that shape you can photograph.



3: DRAW THE VIEW



These are drawings of the Sainsbury Centre by the architect Norman Foster. The building was finished in 1978 and was one of the first to use lots of glass, with a metal structure to create big open spaces filled with light.

The drawings show what he thought was important to capture about the building before it was built.

What is your response now?

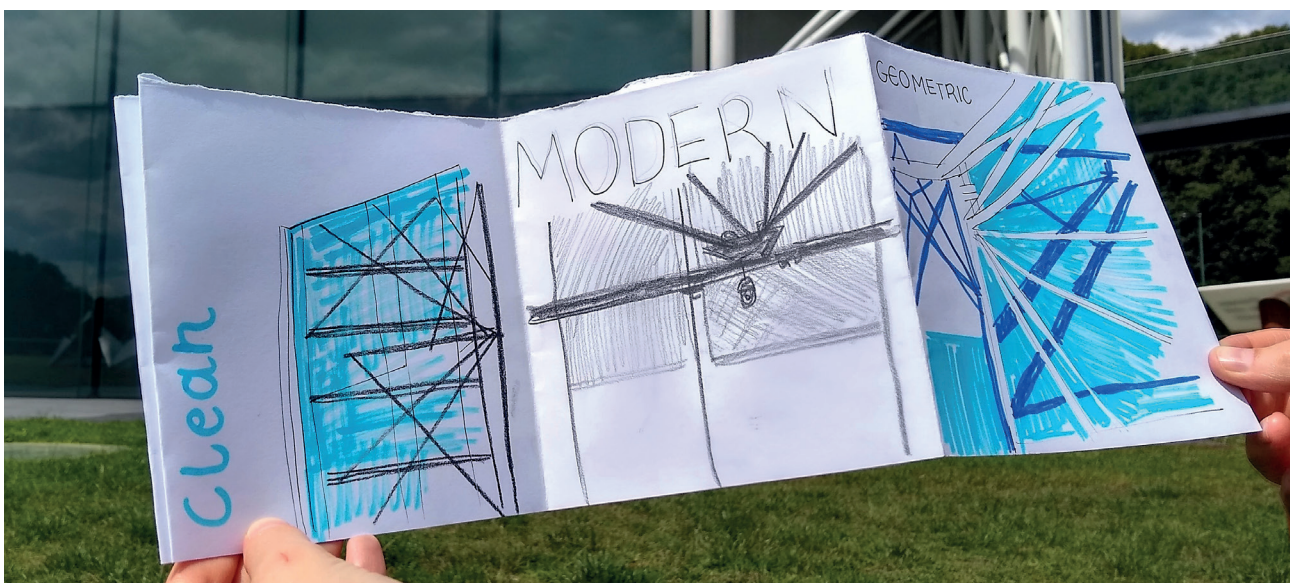
What do you think of the building?

Look back at the 6 words that you wrote in your concertina book and that guided your photography.

Are there any more words you would add now you've looked more closely at the building?

Make drawings of the shapes, lines and angles you can find in the building.

Draw them amongst your chosen words.



4: SELECT - PRINT - CURATE

Develop your ideas further through this follow up activity back at school, or at home.

You'll need:

- Concertina book drawings and/or print-outs of your photos
- Mini *square* viewfinders
- 9 x squares of paper – *1 squared off an A5 sheet of paper to make a 15 x 15cm square*
- Pencils or pens
- **Monoprinting kit** – ink and rollers, plus gelli plates or perspex sheets

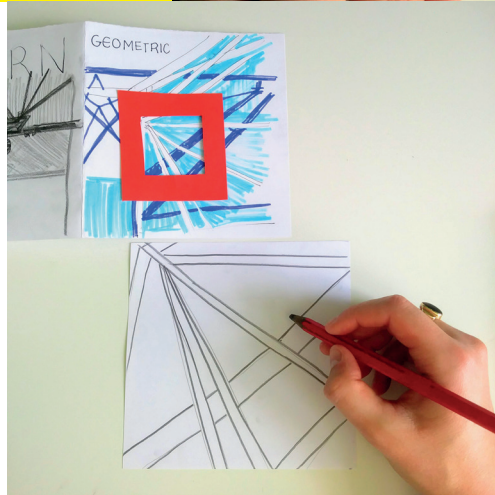
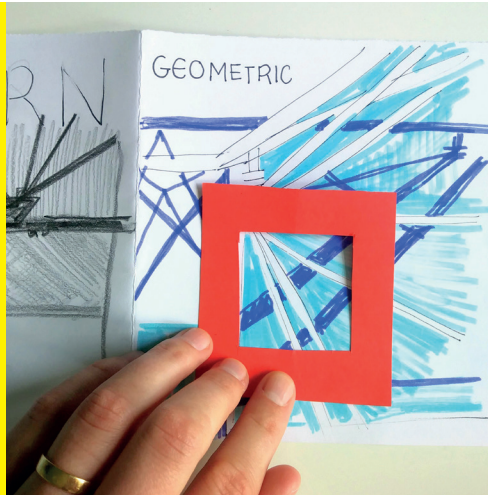
Your photography and drawings are a collection of responses to the Sainsbury Centre building.

Did you capture many geometric shapes and grids?
Select sections of your images to explore the geometric shapes in the building further.

On our phones and on social media we view images in grids all the time, and we'll be taking inspiration from this layout to make a 3 x 3 grid, which complements the grids found in the Sainsbury Centre building.

You could work in a team to put your ideas together in a shared grid arrangement.

1. Start by using a mini square viewfinder to select small sections of the drawings you made in your concertina book, or of print-outs of your photographs.



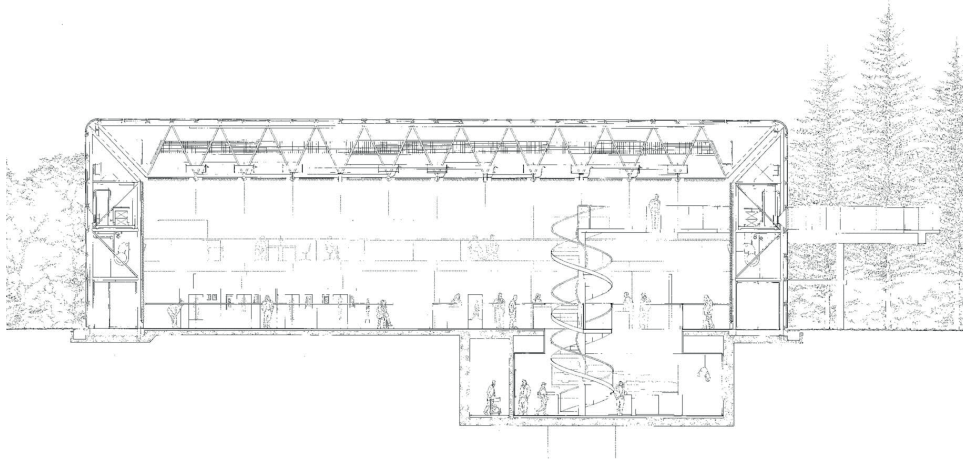
2. Enlarge your chosen selections by re-drawing them on squares of paper as simple line drawings.

3. Monoprint a design using your new enlarged line drawings as inspiration. *Then, repeat steps 1 to 3 until you have 9 squares in total.*



4. Put together your 3 x 3 grid of prints. (Use your enlarged drawings if you can't make prints.)

Try out different arrangements!



Curate your grid of images.

- Play around and explore the **shapes, lines and angles** found in the building by moving your prints or drawings into different arrangements.

Which arrangement expresses the words you chose to photograph and draw from?

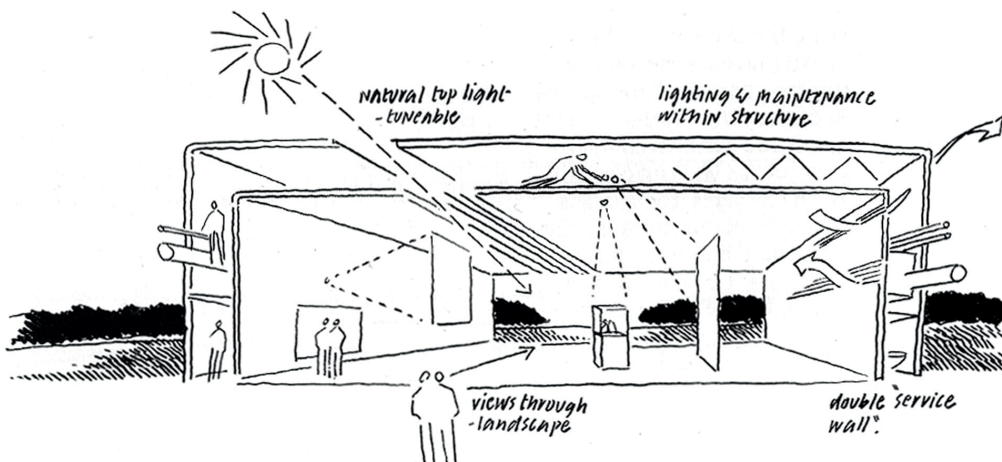
*Which **shapes** have you captured?*

*Do the **lines** flow and connect between the prints?*

*How have you expressed the **angles** of the building in your prints?*

How might you change your arrangement to create a different effect?

Reflect on the 'tools' you used to find the lines, shapes and angles in the Sainsbury Centre building. Could you apply the same techniques to other buildings and compare the results?



**Share your thoughts and
artworks with us using
#SCOnline**